



TIILERI

Tiileri heat-retaining masonry fireplaces are made from genuine natural materials with more than 70 years of experience. By choosing the Tiileri fireplace, you get the best efficiency on the market and the longest heat transfer time.

MASONRY FIREPLACES



TIILERI

• SINCE 1952 •



More information at: www.tiileri.com

TIILERI

• SINCE 1952 •



MASONRY FIREPLACE



SARA TRENDI
Monaco Light

SARA MASONRY FIREPLACE

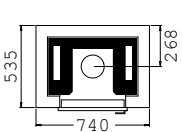


The Sara fireplace is a modern space-saving fireplace, the appearance of which you can choose to your liking. You can choose the color and surface from two options. The Funkkis surface is a colored plastered surface, where you can find the colors of the interior of the moment, from white to black. In addition to the plastered surface, there is a Trend surface, where the fireplace is covered with large ceramic tiles. The fact that there are no vertical seams in the tiling adds to the modern look.

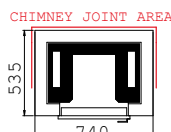
The hatch is always an essential part of the fireplace. Sara's basic hatch is a black cast-iron hatch with surface mounting. You can also choose the optional recessed steel hatch in either black or silver.

As a buyer of Sara, you get a spectacular, authentic fireplace.

TECHNICAL INFORMATION



Top connection



Sub joint

HEIGHT	1690 mm
WIDTH	740 mm
DEPTH	535 mm
WEIGHT	1000 kg
FIRE PIT	280 x 310 mm
FLUE	150 mm

EXTERNAL COMBUSTION AIR available
SAFETY DISTANCE
 back 50 mm
 50 mm for the sides
 1000 mm from the fireplace hatch

// IN THE MANUFACTURE OF BRICKS, WE ONLY USE PURE NATURAL RAW MATERIALS SUCH AS CLAY, SAND AND WATER. //

TRENDI OPTIONS



ROYAL WHITE, MATT



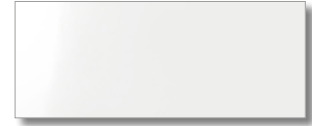
ROYAL BLACK, MATT



MONACO, LIGHT



MONACO, BLACK



ROYAL WHITE, GLOSSY



ROYAL BLACK, GLOSSY



MONACO, GREY

FUNKKIS COLORS



WHITE



VANILLA



KASHMIR
SPECIAL COLOR



LIGHT GREY



GREY



DARK GREY



BLACK,
SPECIAL COLOR

HATCH OPTIONS



BLACK,
CAST IRON
(surface mounting)



black, STEEL
(recessed,
additional price)



SILVER
(recessed,
additional price)

Cast iron (standard),
black and silver (additional price)

PERFORMANCE

- 81 %**
Efficiency
- 30 h**
Heat release time
- 35 kWh**
Heat output

VICTORIA MASONRY FIREPLACE



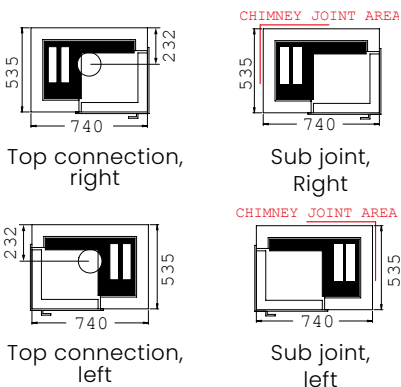
Victoria is today's modern fireplace that combines good heating performance with a neat appearance.

The handsome corner hatch of the fireplace creates an atmosphere, and you can choose a color from black to neutral white from the Funkkis coatings. The Trendi model is tiled with a clear black or white tile, or with the nuanced tiles of the new Monaco tile series.

You can choose black or silver as the color of the fireplace door.

Victoria is a genuine heat-retaining masonry fireplace.

TECHNICAL INFORMATION

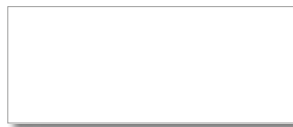


HEIGHT 1690 mm
 WIDTH 740 mm
 DEPTH 535 mm
 WEIGHT 970 kg
 FIRE PIT 350x300 mm
 FLUE 150 mm

EXTERNAL COMBUSTION AIR available
SAFETY back 50 mm
 50 mm to the side
 1000 mm from the fireplace hatch

SAFETY IS YET ANOTHER STARTING POINT FOR THE DESIGN OF TILERI FIREPLACES. A LOW SURFACE TEMPERATURE IS CHARACTERISTIC OF TILERI FIREPLACES. IT IS A SAFETY FACTOR, ESPECIALLY IN FAMILIES WITH CHILDREN.

TRENDI OPTIONS



ROYAL WHITE, MATT



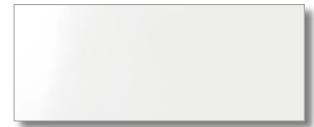
ROYAL BLACK, MATT



MONACO, LIGHT



MONACO, BLACK



ROYAL WHITE, GLOSSY



ROYAL BLACK, GLOSSY



MONACO, GRAY

FUNKKIS COLORS



WHITE



VANILLA



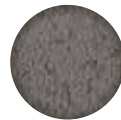
KASHMIR
SPECIAL COLOR



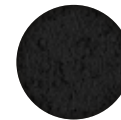
LIGHT GREY



GREY



DARK GREY



BLACK,
SPECIAL COLOR

HATCH OPTIONS black and silver (additional price)



BLACK, STEEL
(recessed)



SILVER
(recessed, additional price)

PERFORMANCE

81 %
Efficiency

30 h
Heat release time

35 kWh
Heat output

VERONIKA MASONRY FIREPLACE



Veronika is a diamond in the interior. The fire can be seen everywhere in the room from the glass doors that open in three directions, and it certainly makes the fireplace the most impressive piece of furniture in the room. In addition to this, Veronika is a genuine heat-retaining masonry fireplace.

Veronika is available as a plastered Funkkis or a tiled Trendi model. Funkkis coatings can be found from white to black, not forgetting shades of grey. The tile options of the Trendi model can be found from clear white and black to the nuanced shades of the Monaco tile series.

TRENDI OPTIONS



ROYAL WHITE, MATT



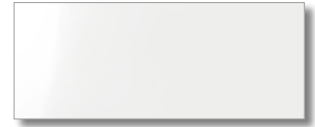
ROYAL BLACK, MATT



MONACO, LIGHT



MONACO, BLACK



ROYAL WHITE, GLOSSY



ROYAL BLACK, GLOSSY



MONACO, GREY

FUNKKIS COLORS



WHITE



VANILLA



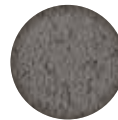
KASHMIR,
SPECIAL COLOR



LIGHT GREY



GREY



DARK GREY



BLACK,
SPECIAL COLOR

HATCH OPTIONS

black and silver (additional price)

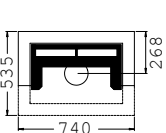


BLACK
(recessed, standard)

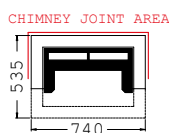


SILVER
(recessed, additional price)

TECHNICAL INFORMATION



Top connection



Sub joint

HEIGHT	1667 mm
WIDTH	740 mm
DEPTH	535 mm
WEIGHT	950 kg
FIRE PIT	220 x 440 mm
FLUE	150 mm

EXTERNAL COMBUSTION AIR
available
SAFETY DISTANCE
back 50 mm
1000 mm from the
fireplace hatch

// WITH TIILERI'S BRICK FIREPLACES, YOU GET THE BEST EFFICIENCY ON THE MARKET, AS WELL AS THE LONGEST HEAT TRANSFER TIME, AND WITH IT, A SAFE AND PLEASANT SURFACE TEMPERATURE. THIS IS ONLY CHARACTERISTIC OF BRICK. //

PERFORMANCE

- 81 %**
Efficiency
- 30 h**
Heat release time
- 35 kWh**
Heat output

TIILERI

• SINCE 1952 •



TIILERI

VERONIKA FUNKKIS

BLOCK CHIMNEY

T600, €€



TIILERI BLOCK T600,
SUB AND TOP
CONNECTION
(Ø 150 mm)

SAFETY DISTANCE:

- For combustible materials 100mm in the mid/upper sole
- Safety distance to combustibles for materials 50 mm in a ventilated room

Funkkis: black
Chimney: black

STEEL CHIMNEY

T600, €€



TIILERI STEEL CHIMNEY
T600, PRIME
TOP CONNECTION
(Ø 150mm)

SAFETY DISTANCE:

- For combustible materials 110 mm

Tile: Monaco grey
Chimney: steel



WHITE



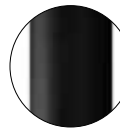
VANILLA



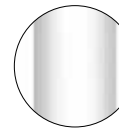
KASHMIR
SPECIAL COLOR



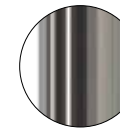
LIGHT GREY



BLACK



WHITE



STEEL



GREY



DARK GREY



BLACK,
SPECIAL COLOR

CHIMNEYS

In order to obtain the safest possible overall, the chimney must be carefully selected to match the fireplace. We have chosen the best options from Finnish chimney manufacturers for this product series so that you can use your fireplace without worry. All Tiileri chimneys are tested and belong to the highest T600 heat class.

BLOCK CHIMNEY

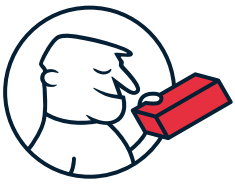
Finnish made block chimney is used, which is coated in the same Funkkis color as the fireplace itself. In this way, a uniform whole is obtained.

STEEL CHIMNEY

An alternative to a plastered block chimney is a steel chimney, with steel, white or black as color options. Steel chimney is manufactured by Tiileri's partner and intended for these fireplace models. The steel chimneys sold by Tiileri meet all the requirements of the T600 heat class and are resistant to soot fire.

EXTERNAL COMBUSTION AIR

The Airbox system developed by Tiileri helps in bringing replacement air into the fireplace. In modern houses, along with vapor barrier and mechanical ventilation, it is necessary to take care of sufficient air supply to the fireplace as well.



TIILERI

TIILERI HEAT STONE

The shell structure of Sara, Victoria and Veronika uses a novelty developed by Tiileri: heat stone that stores heat efficiently. Heat stone's properties include good heat storage capacity, dimensional accuracy, strength, ecology and it is quick to install. Tiileri heat stone is almost entirely made from recycled materials.



CLEAN COMBUSTION

Sara, Victoria and Veronika meet all the requirements of today's fireplaces, also in terms of clean combustion. In addition to the CE mark, all are Eco Design tested. The fireplaces are equipped with a Tiileri grate, thanks to which the emissions are minimal and, for example, the efficiency is very high. After choosing these fireplaces, you will get the full heat benefit from burning wood in addition to a beautiful appearance.



TIILERI

• SINCE 1952 •

www.tiileri.com

email: info@tiileri.fi